

FLORENTINE SERIES

UNGLAZED PORCELAIN - RECTIFIED

Price Range: \$6.00 /sqf

GREY

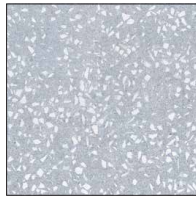
Matte Finish

3/8" Thick

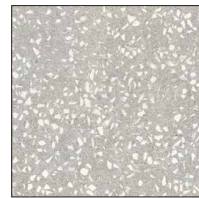
Colors Available in this Series



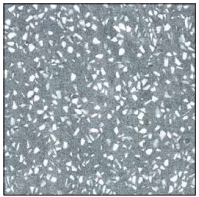
White



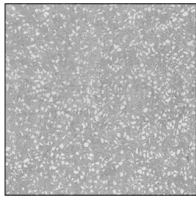
Light Grey



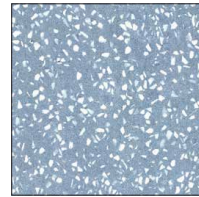
Taupe



Dark Grey



Gray



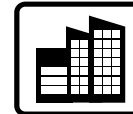
Dark Blue



Residential



Commercial



Indoor



Outdoor



Wall



Floor



Sizes Available

24" x 24" (Nominal)

Finishes Available

Matte Finish

Please ask for pictures of slabs or the group of tiles of this product to determine the actual selection of the material.

Water Absorption	ASTM C373-17	< 0.5%	Conforms
Dynamic C.O.F.	ANSI A137.1-2012	≥ 0.42	Conforms
Bending/Breaking Strength	ASTM-C648	≥ 250 lbs.	Conforms
Deep Abrasion Resistance	ASTM C-1243	≤ 175mm ³	Conforms
Chemical Resistance	ASTM C650-04	min. UB	Conforms
Stain Resistance	C1378-04	> Class 3	Conforms

For questions about samples please contact: **Mr. Can (John) Ozturk, CSI**
1-888-263-3044 or info@codeimpex.com

CODE Impex
 STONE GROUP